

# Infrared Camera Thermo - Cam with USB - Connection

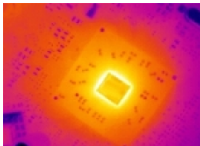
## Characteristics

- ▶ High Accuracy within Temperature Range of -20°C up to 900°C
- ▶ Compact Design – Easy to Use
- ▶ Excellent thermal sensitivity (NETD) of 0,08K
- ▶ Exchangeable lenses with 6° FOV, 23° FOV or 48° FOV
- ▶ Real-Time thermography with 120Hz frame rate
- ▶ Power Supply via USB - Interface
- ▶ Windows XP / Vista – Software „Thermo - Cam“
- ▶ Analogue In – and Output, Trigger – Interface
- ▶ Lightweight (250g) and Rugged (IP65)

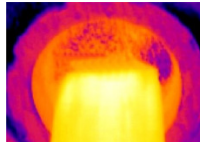


## Typical Applications

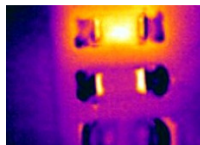
### ▶ R&D Electronic



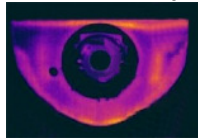
### ▶ Process Control Extrusion



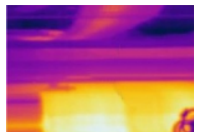
### ▶ R&D Electronic Devices



### ▶ R&D Mechanical Components



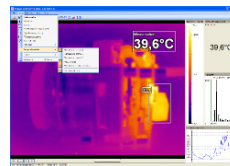
### ▶ Process Control of Calendering



### ▶ Production of Solar Panels

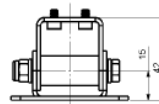
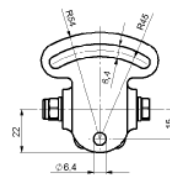


## Software Thermo – Cam :



- Display of the thermal image in real time (120Hz) with recording function (video, snap shot)
- Complete set up of parameters and remote control of the camera
- Detailed analysis of fast thermo-dynamic processes

## Accessories:



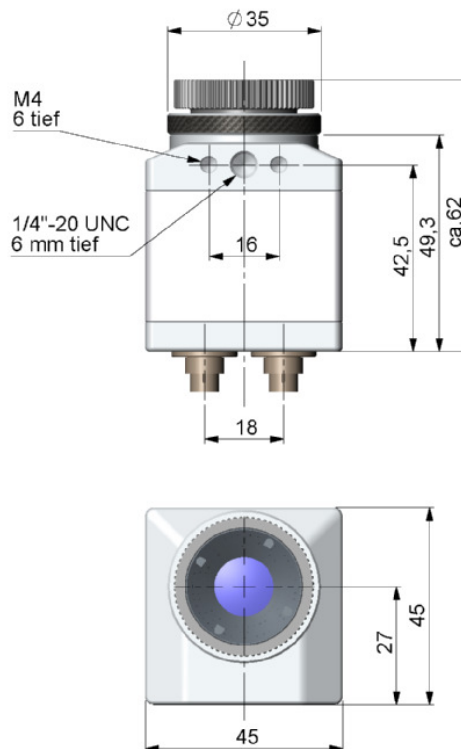
Mounting Base with Protective Housing

# Infrared Camera Thermo - Cam with USB - Connection

## Technical Data:

General Specifications	
Protection Rating	IP65
Operating Temp.	0° C to +50° C
Storage Temp.	-40° C to +70° C
Relative Humidity<	20 – 80%, non condensing
Shock	25G, IEC 68-2-29
Vibration	2G, IEC 68-2-6
Weight	250g, incl. Lens
Electrical Specifications	
Output	USB 2.0
Power Supply	USB powered
Process Interface (electrically isolated)	0 – 10V output 0 – 10V input Trigger input
Tripod Mount	¼ - 20 UNC
Measurement Specifications	
Temperature Range	-20° C to +100° C 0° C to +250° C +150° C to +900° C
Detector	uncooled FPA – Micro Bolometer 35 x 35 µm
Thermal Sensivity (NETD)	0,08K with 23° FOV/F = 0,7 0,3K with 6° FOV/F = 1,6 0,1K with 48° FOV/F = 1
Refresh Rate	120Hz
Spectral Range	7,5 – 13µm
Optical Resolution	160 x 120 pixel
System Accuracy	±2% or ±2° C
Resolution (Display)	0,1° C
Lenses	48° x 37° / f = 4,5mm 23° x 17° / f = 10mm 6° x 5° / f = 35,5mm
Measurement Modes	Flexible spot with crosshair marking, fixed measurement field with automatic display of maximum-, minimum- or average value
Color Palettes	Iron, rainbob, black and white, black and white inverted
Set up Controls (via menu)	Measurement modes, full automatic, manual, color palettes, emissivity, file management, date/time, °C / °F, language
Emissivity	0,10 – 1,00 adjustable

## Dimensions:



## Scope of Delivery:

- ▶ Thermo – Cam incl. a selectable Lens
- ▶ Stand
- ▶ Transport Case
- ▶ Operating Manual
- ▶ USB – Cable
- ▶ Process – Interface – Plug (5 – pole)
- ▶ Software Thermo – Cam: for Real Time Processing and Analyzing of thermal Images